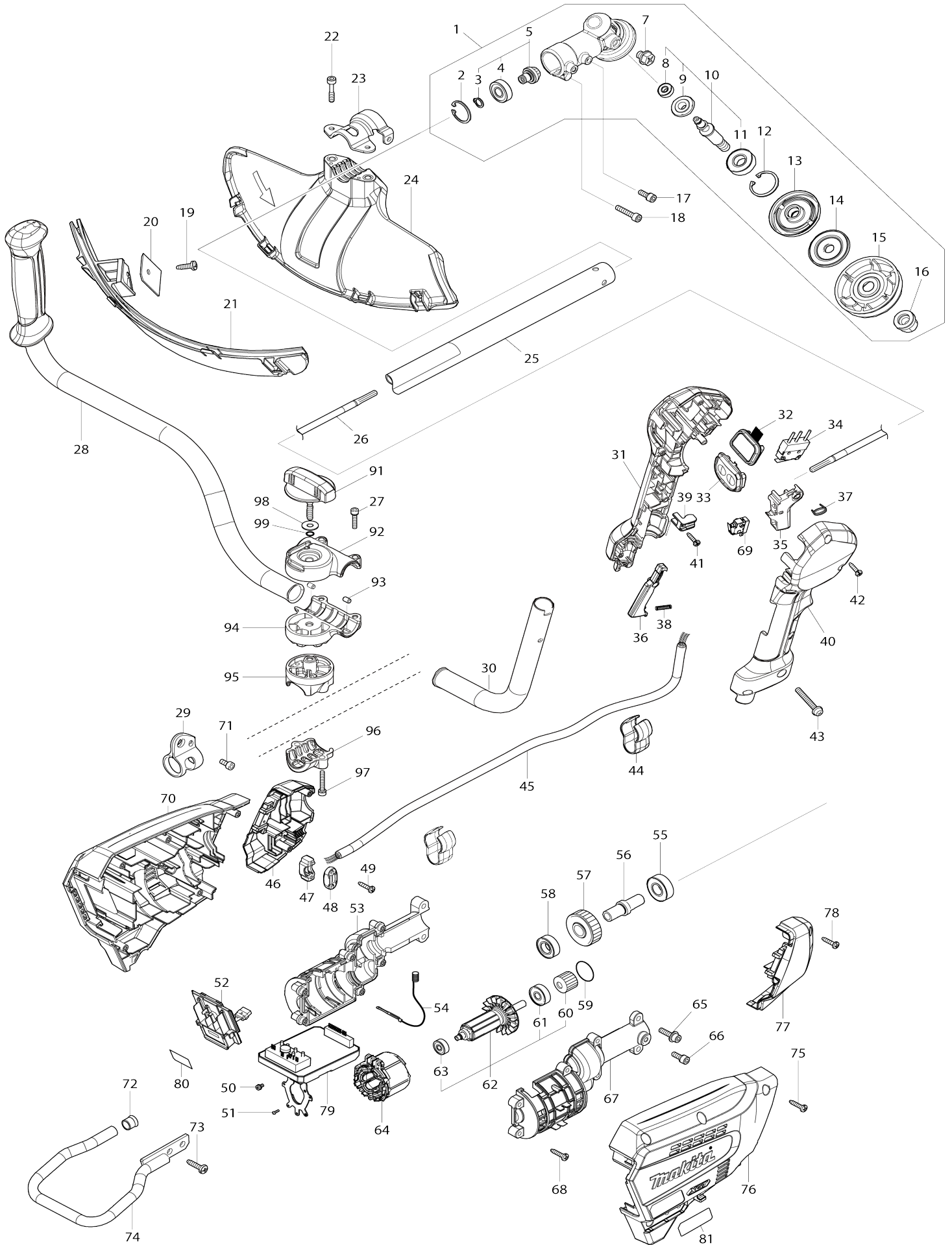


# Model No.UR016G CORDLESS GRASS TRIMMER



Model No.UR016G CORDLESS GRASS TRIMMER

Item No.	Parts No.	Description	Interchangeability	Q'ty	New/Old	Note1	Note2
001	126840-9	GEAR CASE ASSEMBLY G		1			
D10		INC. 2,5,7,10,12-16					
002	259072-4	RETAINING RING (INT)R-24		1			
003	259071-6	RETAINING RING (EXT) S-9		1			
004	210157-1	BALL BEARING 609ZZ		1			
005	136949-9	SPIRAL BEVEL GEAR 14 ASSEMBLY		1			
D10		INC. 3,4					
007	265590-2	+HEX.BOLT M8X10 WITH R		1			
008	210180-6	BALL BEARING 696ZZ		1			
009	226184-8	SPIRAL BEVEL GEAR 19		1			
010	136973-2	CUTTER SHAFT G ASSEMBLY		1			
D10		INC. 8,9,11					
011	211138-8	BALL BEARING 6001LLU		1			
012	257456-0	RETAINING RING (INT)R-28		1			
013	140A87-7	RECEIVE WASHER COMPLETE		1			
014	347766-4	CLAMP WASHER US		1			
015	413201-5	CUP US		1			
016	252236-9	HEX. LOCK NUT M10-17		1			
017	922216-6	H.S.H.BOLT M5X14 WITH W		2			
018	922242-5	HEX. SOCKET HEAD BOLT M5X25		1			
019	266388-0	TAPPING SCREW 5X16		1			
020	347115-5	CUTTER		1			
021	140X35-4	PROTECTOR U EXT. 300-330 COMP		1			
022	251513-6	H.S.H.BOLT M5X25		2			
023	347107-4	PROTECTOR CLAMP 24		1			
024	412969-0	PROTECTOR U 330		1			
025	141N92-5	SHAFT PIPE COMPLETE I		1			
C10	819312-8	MAKITA LOGO LABEL		1			
C20	8040V7-0	CAUTION LABEL		1			
026	327B90-3	SHAFT		1			
027	922241-7	HEX. SOCKET HEAD BOLT M5X25		2			
028	141E67-0	HANDLE 19 L COMPLETE		1			
029	347116-3	HANGER		1			
030	327861-6	HANDLE 19 R		1			
031	183X79-1	GRIP SET		1			
C10	252180-0	HEX. LOCK NUT M5-8		1			
D10		INC. 40					
032	141D26-8	INDICATION CIRCUIT COMPLETE G		1			
033	140W06-5	SWITCH CIRCUIT COMPLETE G		1			
C10	819J26-9	SWITCH LABEL		1			
034	632U35-5	SWITCH UNIT		1			
035	413P49-1	SWITCH LEVER		1			
036	413P48-3	LOCK OFF LEVER		1			
037	233540-5	TORSION SPRING 11		1			
038	233101-1	COMPRESSION SPRING 4		1			

039	687260-7	STRAIN RELIEF		1		
040	183X79-1	GRIP SET		1		
C10	252180-0	HEX. LOCK NUT M5-8		1		
D10		INC. 31				
041	266326-2	TAPPING SCREW 4X18		1		
042	266326-2	TAPPING SCREW 4X18		5		
043	911258-5	PAN HEAD SCREW M5X35		1		
044	457458-8	CLAMP		2		
045	699224-9	POWER SUPPLY CORD UNIT		1		
046	183X81-4	HOUSING COVER SET		1		
D10		INC. 77				
047	687051-6	STRAIN RELIEF		1		
048	687123-7	STRAIN RELIEF		1		
049	266326-2	TAPPING SCREW 4X18		2		
050	652069-6	FLAT HEAD SCREW M3X6		3		
051	266490-9	TAPPING SCREW PT 2X6		3		
052	632P76-1	TERMINAL UNIT		1		
053	183X80-6	MOTOR HOUSING SET		1		
C10	931202-6	HEX. NUT M5		2		
D10		INC. 67				
054	632R79-7	LEAD UNIT		1		
055	210244-6	BALL BEARING 6001ZZ		1		
056	327719-9	SPINDLE HUB		1		
057	227848-7	HELICAL GEAR 33		1		
058	210243-8	BALL BEARING 6901ZZ		1		
059	213925-1	O-RING 21		1		
060	227A68-9	HELICAL GEAR 16		1		
061	210236-5	BALL BEARING 627ZZ		1		
062	519814-1	ROTOR ASS'Y		1		
D10		INC. 60,61,63				
063	210235-7	BALL BEARING 625ZZ		1		
064	629340-3	STATOR		1		
065	922234-4	H.S.H.BOLT M5X20 WITH WG		2		
066	922216-6	H.S.H.BOLT M5X14 WITH W		1		
067	183X80-6	MOTOR HOUSING SET		1		
C10	931202-6	HEX. NUT M5		2		
D10		INC. 53				
068	266326-2	TAPPING SCREW 4X18		6		
069	632U36-3	SWITCH UNIT		1		
070	183Y16-1	HOUSING SET		1		
C10	263005-3	RUBBER PIN 6		2		
C20	8012U4-2	XGT LOGO LABEL		1		
D10		INC. 76				
071	922212-4	HEX. SOCKET HEAD BOLT M5X12		1		
072	422230-7	CAP		1		
073	266420-0	TAPPING SCREW 5X20		2		
074	347B26-6	BATTERY GUARD		1		
075	266326-2	TAPPING SCREW 4X18		5		
076	183Y16-1	HOUSING SET		1		
C10	263005-3	RUBBER PIN 6		2		
C20	8012U4-2	XGT LOGO LABEL		1		
D10		INC. 70				

077	183X81-4	HOUSING COVER SET		1		
D10		INC. 46				
078	266326-2	TAPPING SCREW 4X18		2		
079	620L55-7	CONTROLLER		1		
080	8587V4-0	UR016G SERIAL NO. LABEL		1		
081	8587U9-3	UR016G NAME PLATE		1		
091	162965-5	KNOB 57		1		
092	141D69-0	UPPER HANDLE HOLDER19 COMPLETE		1		
C10	263005-3	RUBBER PIN 6		1		
093	263005-3	RUBBER PIN 6		2		
094	312B85-9	LOWER HANDLE HOLDER 19		1		
095	312B65-5	UPPER PIPE HOLDER 24		1		
096	312B66-3	LOWER PIPE HOLDER 24		1		
097	922251-4	HEX. SOCKET HEAD BOLT M5X30		2		
098	253047-5	FLAT WASHER 6		1		
099	213960-9	O RING 5		1		
A01	122A37-4	BAND ASSEMBLY		1		
A02	198383-1	PLASTIC BLADE 255 SET ME		1		
A03	783013-3	BOX DRIVER 16-17		1		
A04	783202-0	HEX. WRENCH 4		1		
A05	831304-7	ACCESSORY BAG		1		
E01	807949-3	SOUND 94DB LABEL		1		
F02	1911X4-8	PROTECTOR U 330 SET		1		
F21	199450-5	GREASE VESSEL SET		1		
A06	412393-7	BATTERY COVER		1		
A07	***DC40RC	DC40RC FAST CHARGER		1		
D10		COMPO-PARTS				
A08	191B26-6	BATTERY BL4040 SET		1		

Please state Parts No. when your order.

Print Date 17/05/2024